



Oldham County Planning and Development Services

M. Louise Allen, Director

100 W. Jefferson Street
Suite 3
LaGrange, KY 40031

Monthly Highlights

January 2010
Volume 9

Phone: (502) 222-1476
Fax (502) 222-3213
www.oldhamcounty.net

- For the first time in the last 12 months, building permits in January 2010 were up more than 35% compared to January 2009. New housing units permitted were up more than 180%.
- The Study Review Committee reviewed the Major Thoroughfare Plan Update and recommended it to the Planning Commission for review in February.

Check out our informative 2009 Annual Report on the county website for interesting information regarding the past year in Planning and Development Services!

Current Planning Activities:

Planning Commission: 1
Oldham County BOA : 3
Minor Plat: 3
No TRC or LaGrange BOA during the month of January.

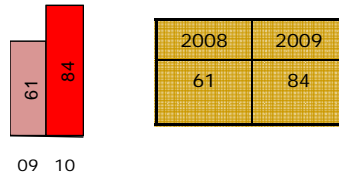
Year to Date (January):

	2009	2010
Planning Comm. Cases	0	4
Planning Comm. Approved Housing Units	0	0
Record Plat (Lot/Unit)	0	16
Minor Plat	3	2
TRC Cases	0	0
BOA Cases	1	2
Landscaping Plan	0	0

Permits:

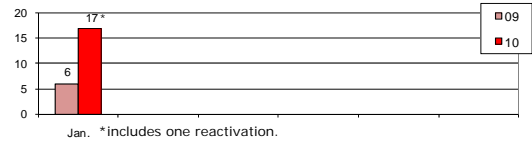
Total Permits

Month of Jan. Year to Date Jan.



Residential Permits (New Housing Units)

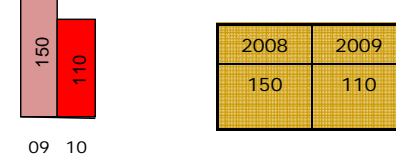
2009 Year-to-Date: 6
2010 Year-to-Date: 17



Inspections:

Total Inspections

Month of Jan. Year to Date Jan.



Code Enforcement

Activities:

Cases opened: 34
Cases closed: 4
Complaint Investigations: 57
Notices of Violation: 7
Citations Issued: 0

Approved or Not?

Planning Commission:

Docket PZ-10-001, a landscape waiver for property located at 2100 S. Hwy 53, LaGrange, was approved.
Docket PZ-10-002, a revision to the Subdivision Regulations: Performance Guarantees for Soil and Erosion Control was approved.
In other business, 2-year extension of expirations were approved for Wolf Lake Estates and Norton Commons Hamlet.

Oldham County Board of Adjustments:

Docket OC-10-001, approval of a rear yard setback variance for a structure located at 2210 W. Hwy 524, Westport, was approved.
Docket OC-10-002, approval of a road frontage variance for the property located at 3317 Halls Hill Road, Crestwood, was approved.

Upcoming meetings/events in February 2010:

Code Enforcement Board: 02/03/10
Technical Review Committee: 02/17/10
Oldham County Board of Adjustments: 02/18/10
Planning Commission: 02/23/10
Study Review Committee: 02/25/10

GIS Corner:

GIS has received the 2009 aerial photography and topographic data for Oldham County from LOJIC. Additional layers such as railroad, hydrographics, road casings, building footprints, and spot heights were also provided at no additional cost as part of our data sharing program with LOJIC.